



RANGE OF ULTRASOUND INSERTS

→ RANGE OF ULTRASOUND INSERTS

A variety of inserts with a wide range of shapes

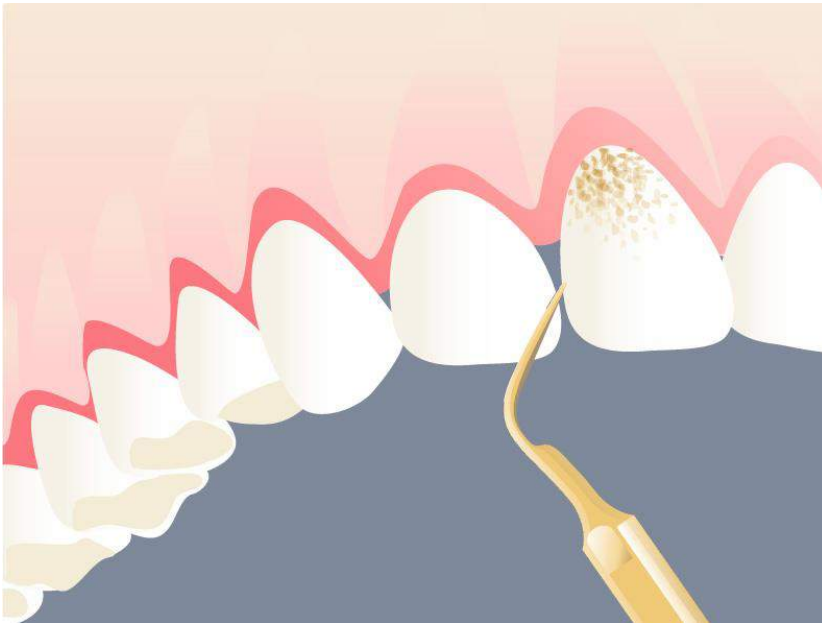


- more than 50 inserts available
- up to 36,000 oscillations per second
- the titanium nitride coating increases the insert surface hardness and lifespan
- inserts are tightened to the handpiece thanks to a dynamometric wrench for an optimal torque control



➔ RANGE OF ULTRASOUND INSERTS

Standard & high-efficiency scaling inserts

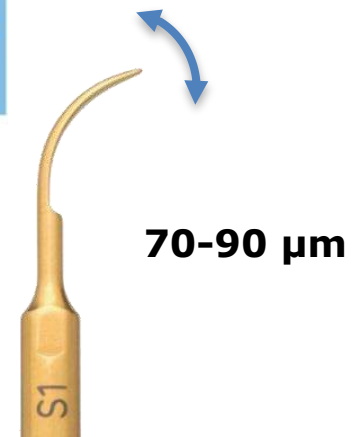


→ STANDARD SCALING INSERTS

Scaling inserts S1, S3, S5

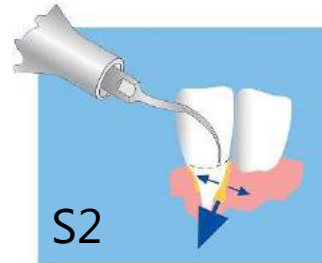


- oscillation 70-90 μm
- removal of larger accumulations of supragingival tartar (S1-S3) and smaller ones (S5)

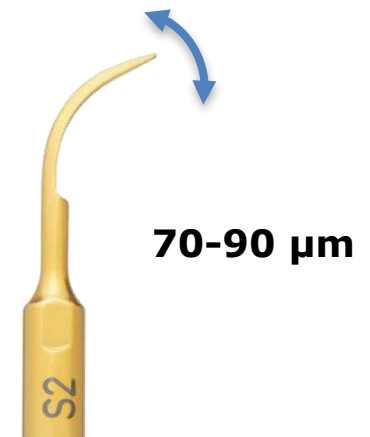


→ STANDARD SCALING INSERTS

Scaling inserts S2 and S4

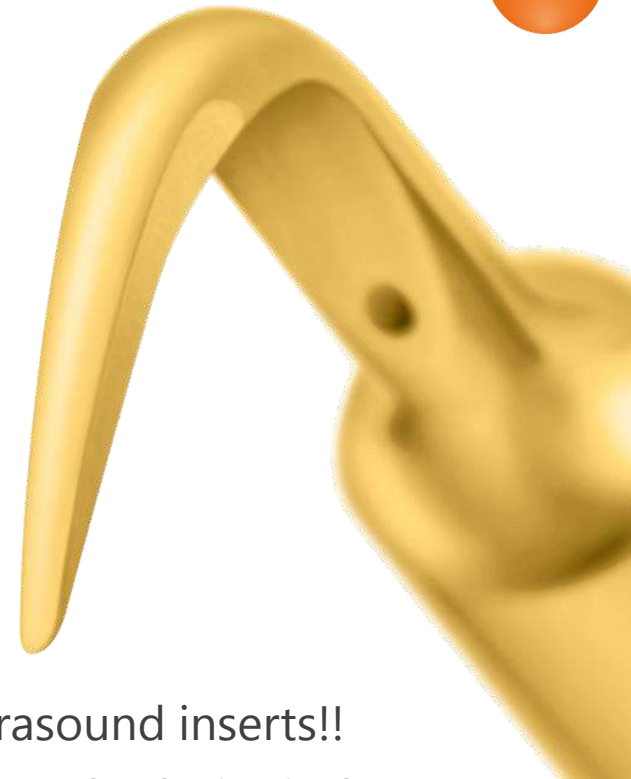


- different shapes for working on interproximal surfaces (S2) or mesial and distal interdental surfaces of the posterior areas (S4)



➔ NEW INSERT S1 SLIM

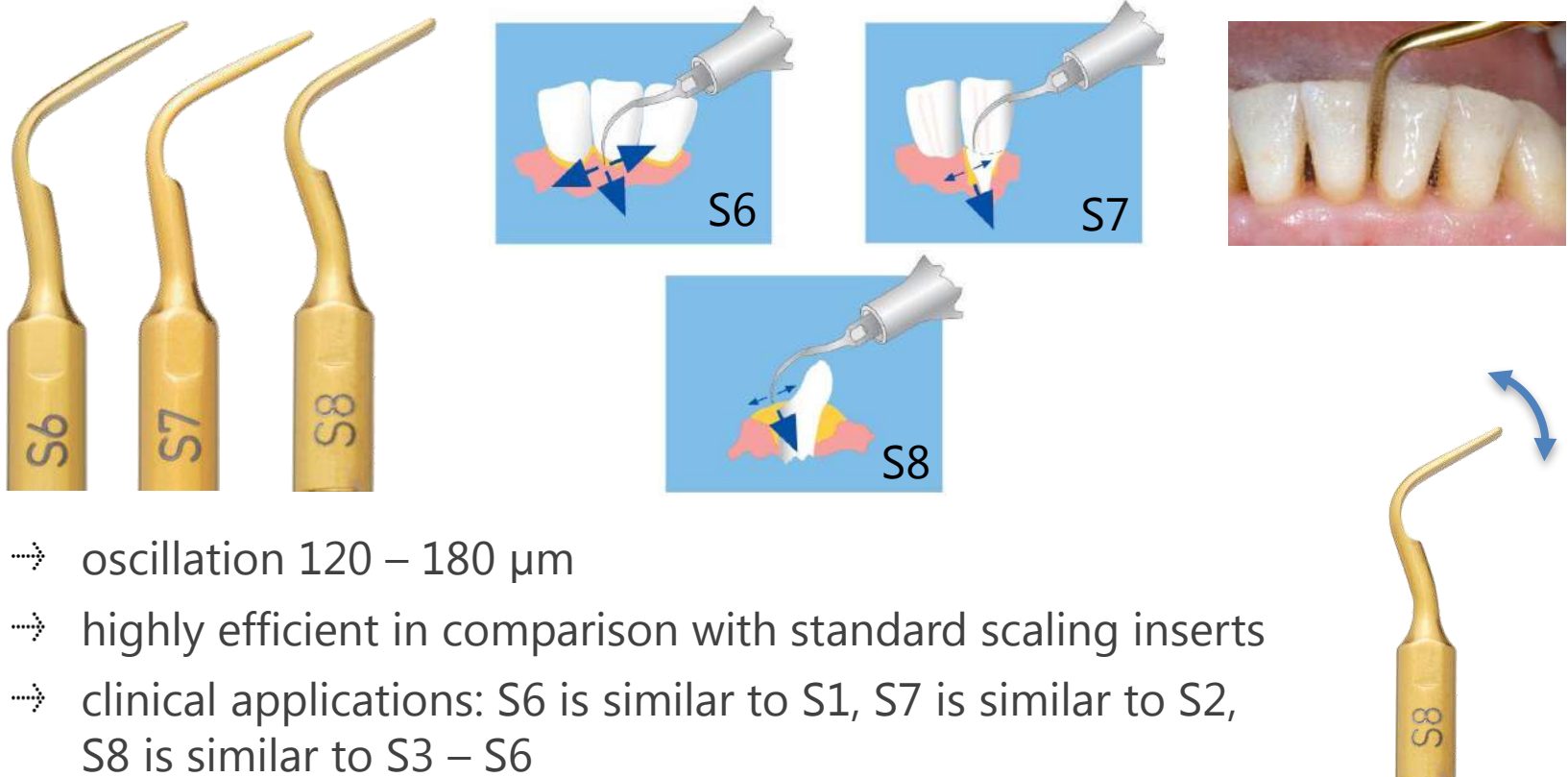
Working out your ups and downs



- ➔ 360° scaling- for the first time in the range of ultrasound inserts!!
- ➔ developed to combine in the same insert a supra and subgingival treatment
- ➔ thanks to the thin shape and the sharp edges, it allows to work efficiently on interproximal surfaces
- ➔ longer and thinner compared to the S1 insert, but with the same characteristics in term of removal, strength and durability

➔ HIGH EFFICIENCY SCALING INSERTS

Scaling inserts S6, S7, S8



- ➔ oscillation 120 – 180 μ m
- ➔ highly efficient in comparison with standard scaling inserts
- ➔ clinical applications: S6 is similar to S1, S7 is similar to S2, S8 is similar to S3 – S6
- ➔ S8 universal for large deposits, S7 suitable for interdental spaces

120-180 μ m

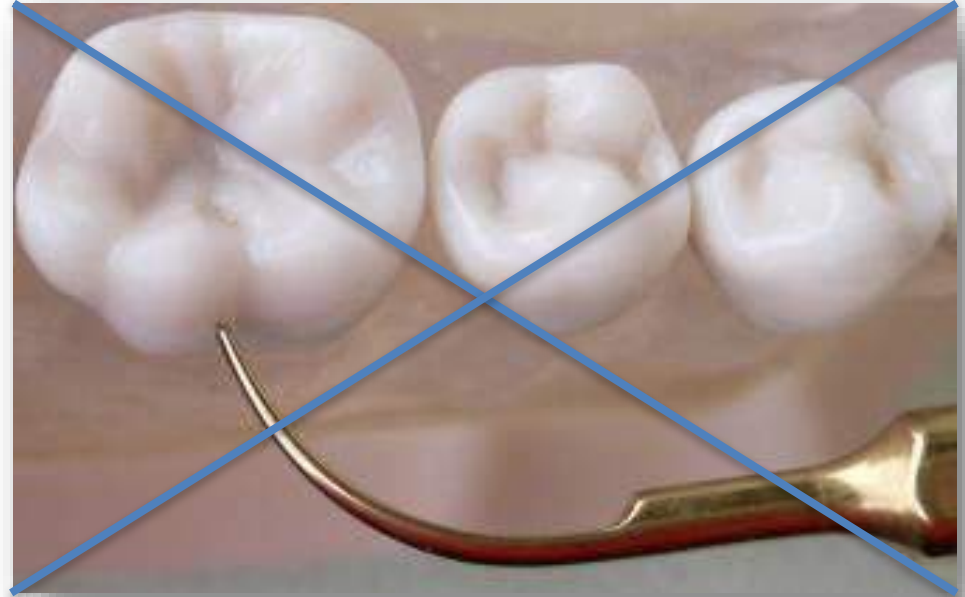
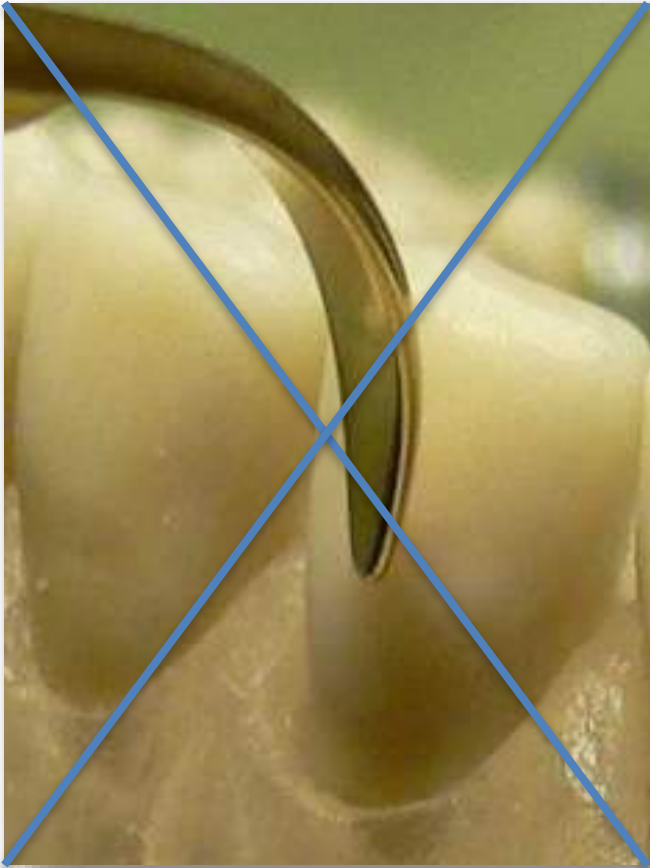
→ STANDARD SCALING INSERTS



→ YES – hold the insert parallel to the tooth surface and move it “back and forth”



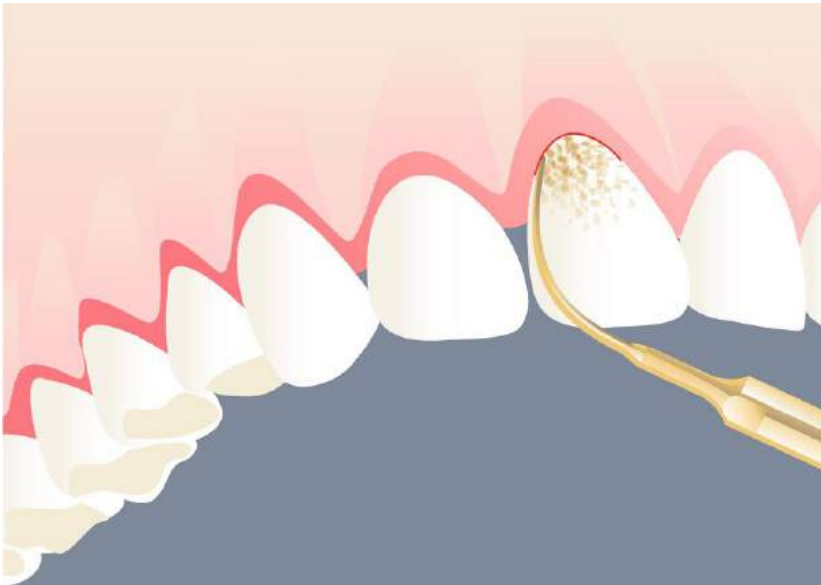
→ STANDARD SCALING INSERTS



- NO – never hold the insert head-on towards the enamel
- NO – never use the tip of the insert on the tooth surface

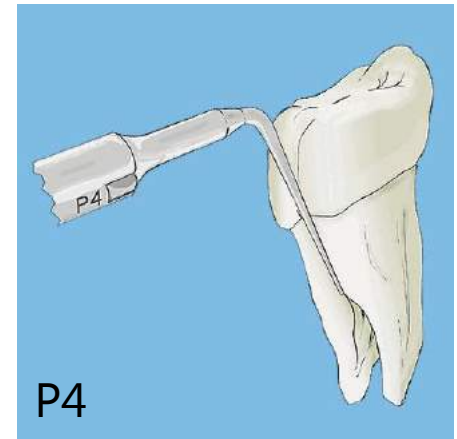
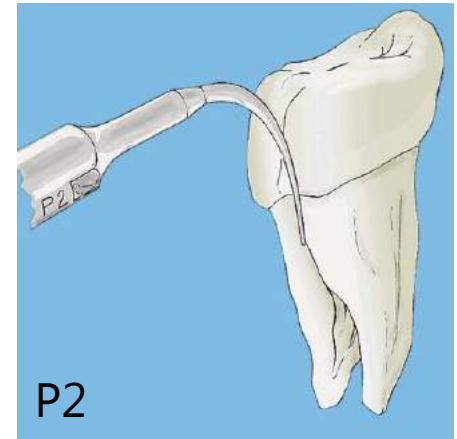
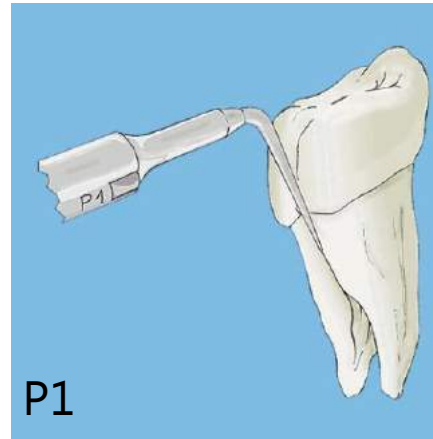
→ STANDARD & ANATOMICAL PERIO INSERTS

Range of ultrasound inserts



→ STANDARD PERIO INSERTS

Perio inserts from P1 to P4



- removal of concretions and biofilm from the root surface (P1, P2 and P4)
- removal of concretions and biofilm from furcations (P3)

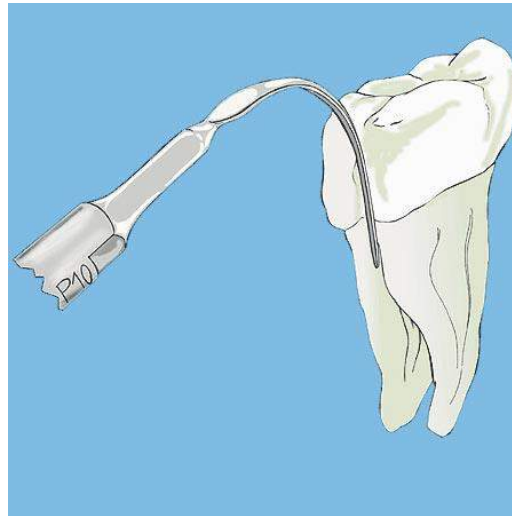
→ STANDARD PERIO INSERTS



- perio inserts must be in contact with the root surface; while applying slight pressure, move them back and forth from the root access to the apical position

➔ ANATOMICAL PERIO INSERTS

Perio insert P10



- ➔ optimal access to root surfaces
- ➔ removal of concretions and biofilm from deep periodontal pockets
- ➔ very thin shape
- ➔ gentle, almost painless treatment

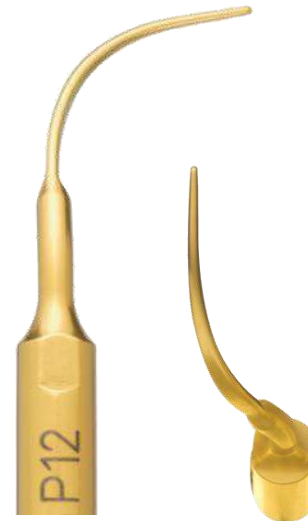
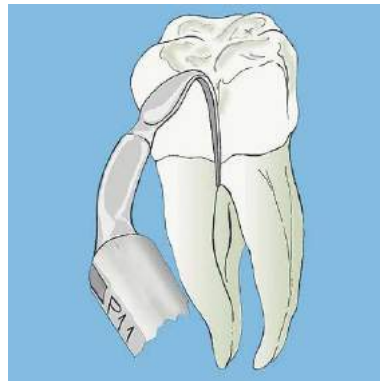


mectron

medical technology

➔ ANATOMICAL PERIO INSERTS

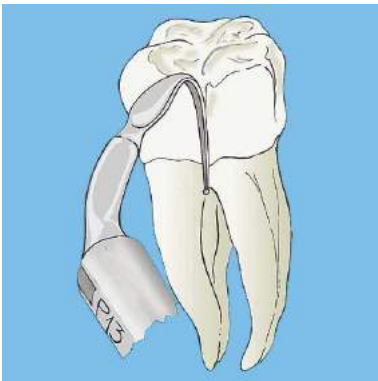
Perio inserts P11 and P12



- ➔ P11 right-curved insert (15° inclination) with round tip
- ➔ P12 left-curved insert (15° inclination) with round tip
- ➔ gentle removal of concrements and biofilm from deep periodontal pockets

→ ANATOMICAL PERIO INSERTS

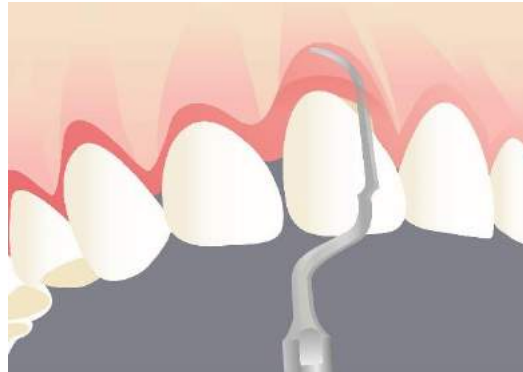
Perio inserts P13 and P14



- P13 right-curved insert (15° inclination) with spherical round tip
- P14 left-curved insert (15° inclination) with spherical round tip
- gentle removal of concrements and biofilm from furcations and concavities
- no risk to the periodontal ligament

➔ NEW INSERTS P15, P16L AND P16R

For a complete periodontal treatment

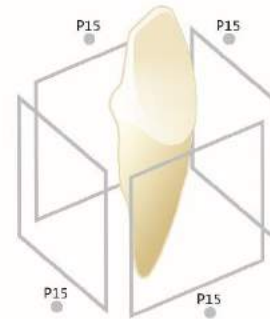
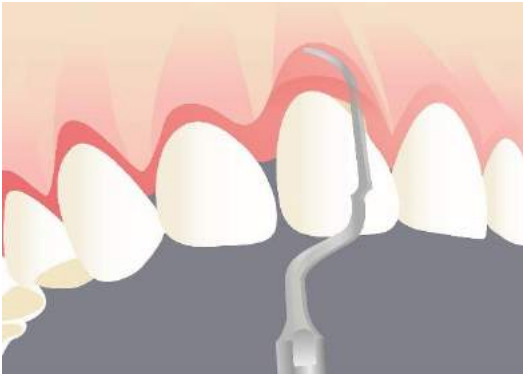


- ➔ specially designed to perform gentle and safe periodontal debridement
- ➔ the maximum efficacy without risk of injury to the soft tissues and periodontal ligament
- ➔ optimal access to the areas difficult to reach (furcations, root surfaces, concavities)
- ➔ elimination of endotoxins and necrotic cement



→ NEW PERIO INSERTS

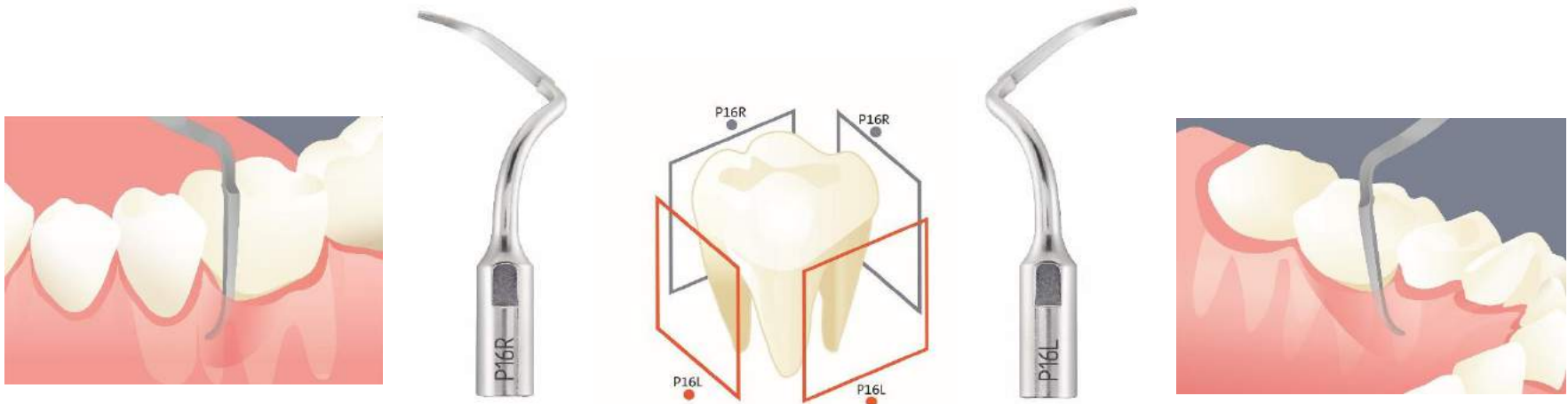
Perio insert P15



- universal curette with round surface
- supra and subgingival concretions and biofilm removal
- easy access to canine and anterior teeth
- debridement of deep periodontal pockets

➔ NEW PERIO INSERTS

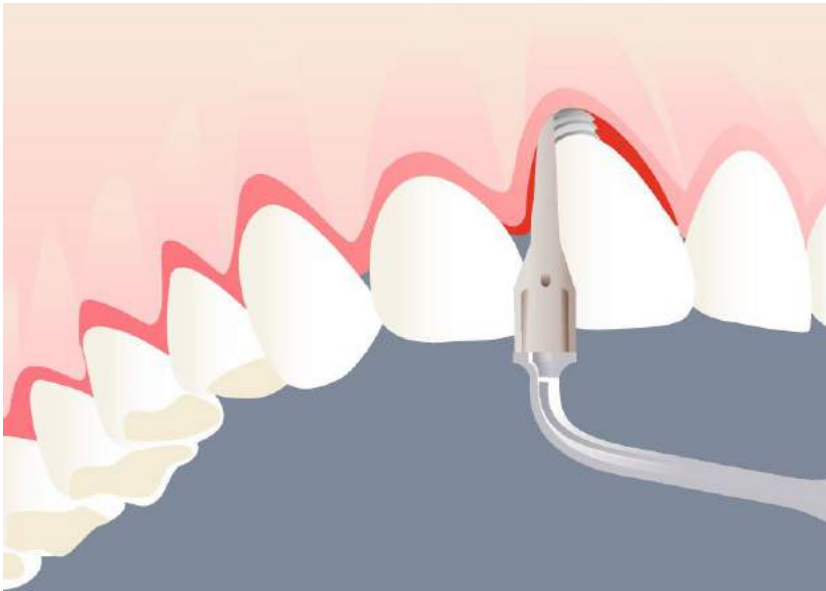
Perio inserts P16R and P16L



- ➔ P16R right angled periodontal curette
- ➔ P16L left angled periodontal curette
- ➔ subgingival concretions and biofilm removal from furcations and deep pockets
- ➔ suitable for supra and subgingival interproximal spaces
- ➔ efficient root planing on molar and premolar areas.

➔ RANGE OF ULTRASOUND INSERTS

Implant cleaning inserts



→ IMPLANT CLEANING INSERT

ICS tip-holder and IC1 tip

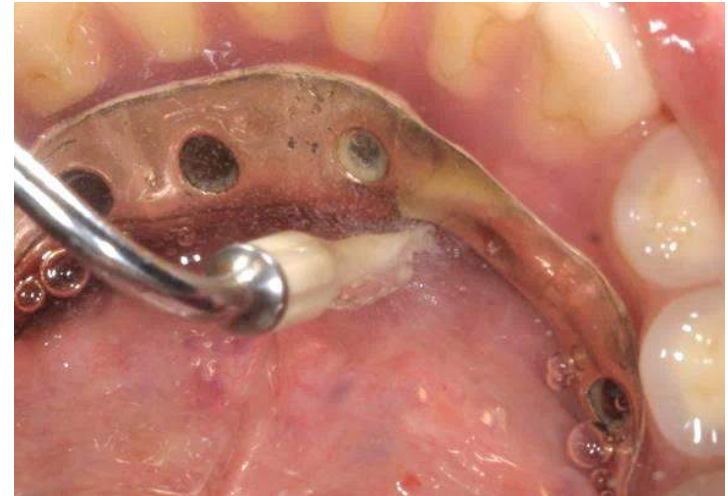


- gentle cleaning of implant surface and restorations
- the IC1 tip screws easily onto the ICS tip-holder

- tip-holder has a 102° angle
- conical tip in PEEK with a working length of 10 mm

→ IMPLANT CLEANING INSERT

ICS tip-holder and IC1 tip



- respects the implant surface (IC1 tip – made of 100% PEEK)
- optimal accessibility and visibility, even in the posterior areas (ICS tip-holder)
- ICS tip-holder and IC1 tip are fully sterilizable
- the absence of a metal core in the IC1 tip eliminates the risk of damaging the implant surface

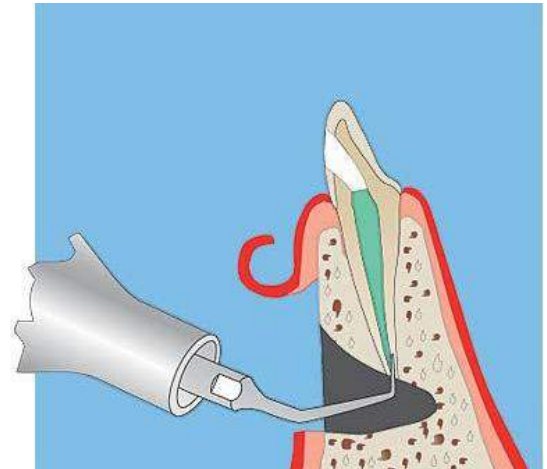


mectron

medical technology

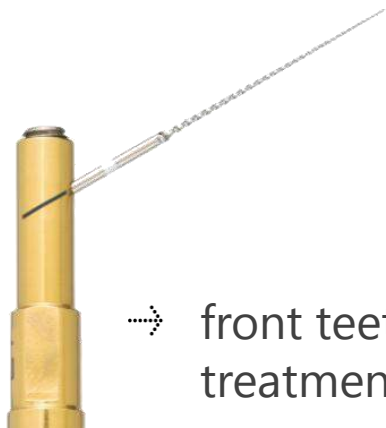
→ ENDO

- root canal cleaning and disinfection
- retrograde endodontic approach
- endodontic retreatment

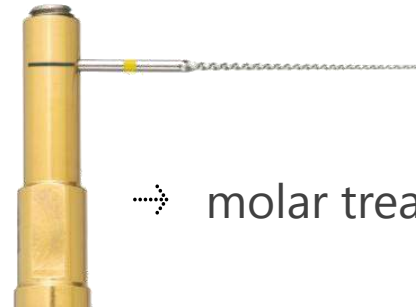


→ ENDO INSERTS FOR ROOT CANAL CLEANING

Endo inserts from E1 to E2 with ni-ti files



→ front teeth and premolar treatment



→ molar treatment

- effective cleaning after canal preparation
- root canal disinfection thanks to the irrigation liquid
- bactericidal effect thanks to the temperature increase of the irrigation liquid
- debris removal (smear layer) generated by an acoustic streaming outcome

→ ENDO INSERTS FOR ROOT CANAL CLEANING

Endo inserts from E1 to E2 with ni-ti files

→ ISO 15



→ ISO 20



→ ISO 25



→ 27 mm length

→ ISO 15



→ ISO 20



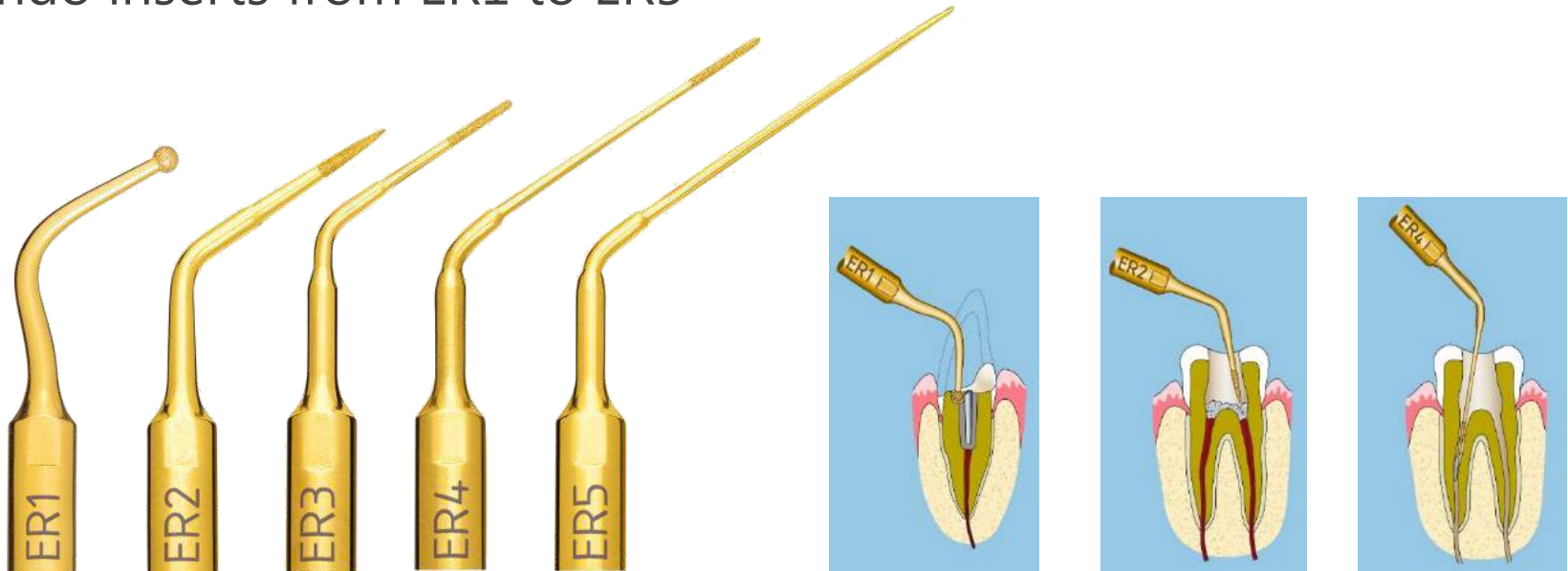
→ ISO 25



→ 31 mm length

→ ENDO REVISION INSERTS

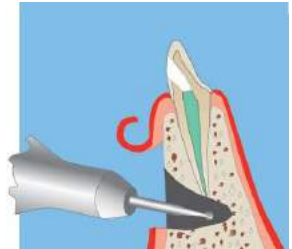
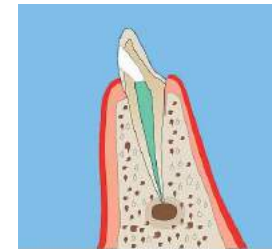
Endo inserts from ER1 to ER5



- exposure of root canal pins (ER1)
- location of concealed or calcified root canal entrances (ER2)
- removal of root elements and fractured inserts in the coronal third of the root canal (ER3-ER4)
- removal of fractured inserts in the medial and apical third of the root canal (ER5)

→ ENDO RETRO INSERTS

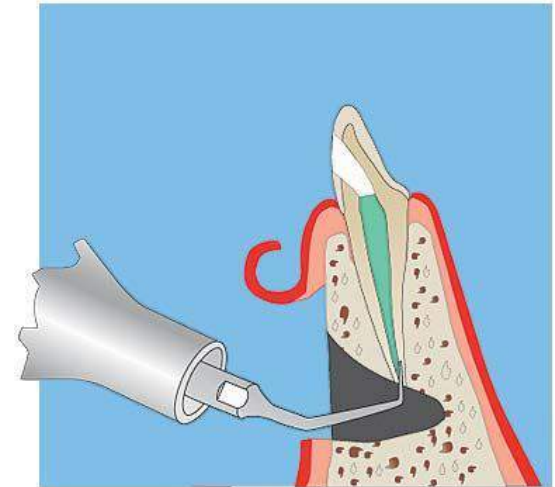
Endo-retro smooth inserts from R1 to R5



- assure a satisfying solution to root canal access by retrograde approach
- their thin and 90° angled structure allow a conservative cut through a minimum wide bone window
- cleaning of the root canal in the front (R2-R3) and in the molar area (R4-R5)
- less invasive treatment
- reduced healing time

→ ENDO RETRO INSERTS

Endo-retro diamond inserts from RD3 to RD5



- for cleaning the root canal in the front (RD3) and in the molar area (RD4-RD5)
- diamond coating for retro preparation (to be used before finishing procedure by means of smooth inserts)
- less invasivity

→ INSERTS FOR PROSTHESIS



→ prosthesis (crown prep tips –
cervical margin preparation)



→ INSERTS FOR PROSTHESIS

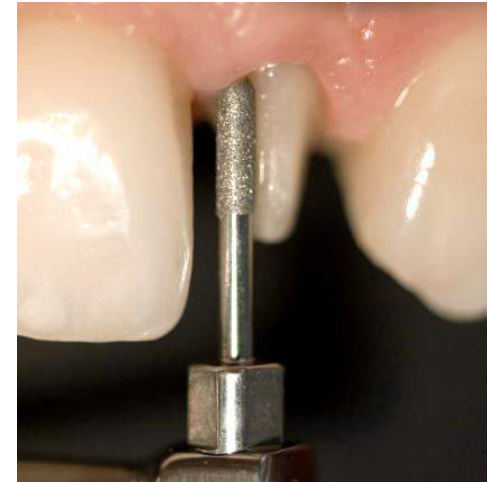
Crown prep tips



- non traumatic and precise technique of preparation and finishing of subgingival margins
- maximum precision and control thanks to the elliptic tip movement
- special shape and unique tip movement enable to work all around the tooth without changing position
- maximum respect of soft tissues
- no trauma or bleeding

→ INSERTS FOR PROSTHESIS

Crown prep tips

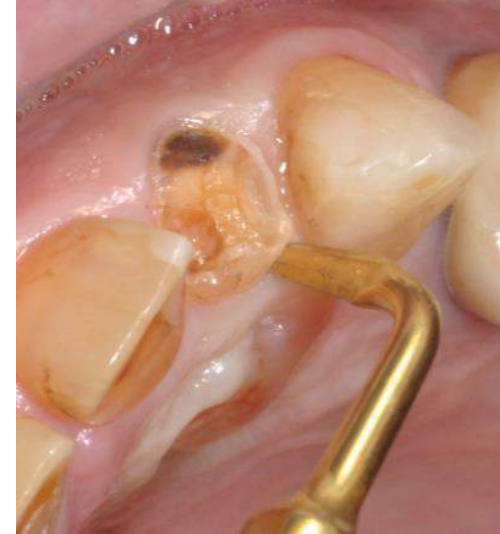


→ available 8 different tips

Length 10 mm		Diamond coating	
diameter		D60	D90 D120
1.2 mm	TA12D60	TA12D90	
1.4 mm	TA14D60	TA14D90	TA14D120
1.6 mm	TA16D60	TA16D90	TA16D120

➔ EXTRACTION INSERTS

Extraction inserts from ME1 to ME3



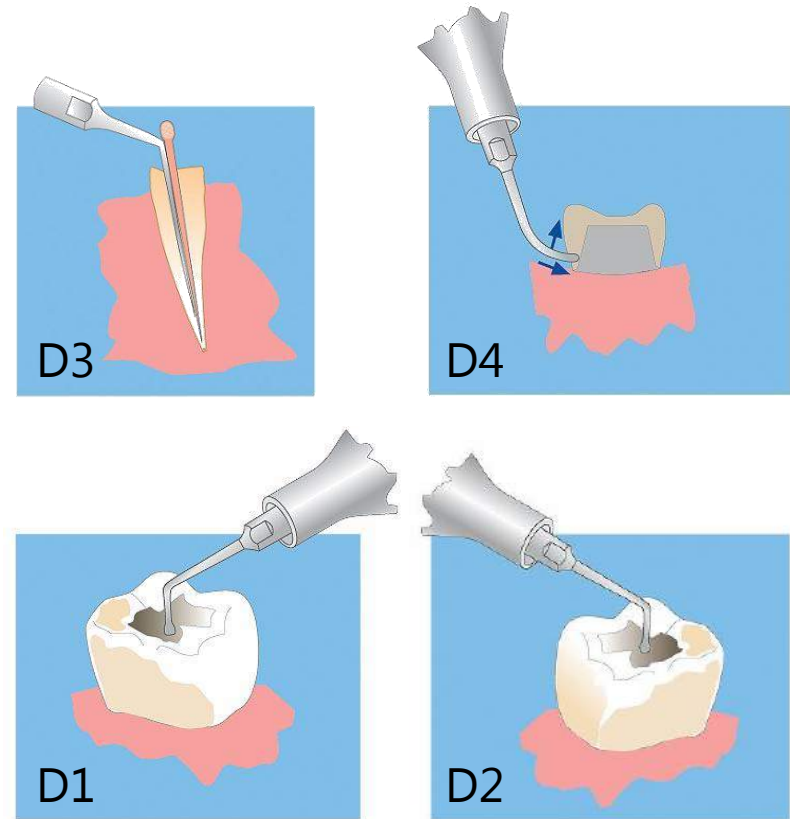
- ➔ a blade thickness of only 0,35 mm guarantees the maximum precision of the cutting action
- ➔ maximum intra-operative sensitivity, allowing to remove the tooth while preserving healthy bone and without damaging the alveolar walls and periodontium surfaces
- ➔ minimize the potential trauma

→ RESTORATIVE DRY WORK INSERTS

Inserts from D1 to D4



- for amalgam condensation in class I, II and V preparations (D1-D2)
- for crowns, bridges and metal points removal (D4)
- for lateral condensation of guttapercha (D3)



➔ THANKS FOR YOUR ATTENTION

